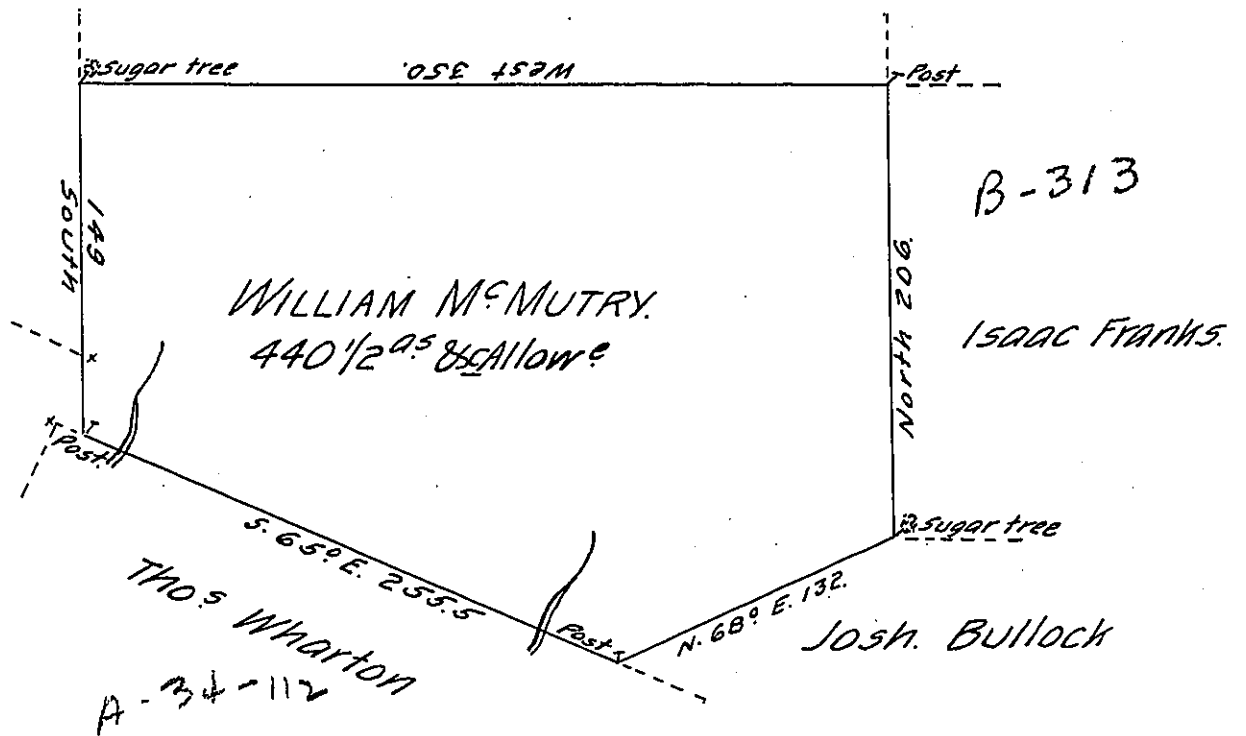


D-290
Peter Brown

Page-250
John Montgomery

Corn^s Barns
C-17-278



Draught of a tract of land Called _____ Situate Joining land Survd
 for Peter Brown & others in Luzern-(formerly Northum^d) County. Containing
 four Hundred & forty acres-1/2 & Allow^e of six $\frac{1}{2}$ Cent for roads &c. Survd for
 William M^cMutry the 15th Day of Nov^r 1786, in pursuance of a warrant Dated the
 24th Day of August 1784.

by
 W^m Gray, D.S.

To John Lukens, Esq^r }
 Survr. Gen! }

IN TESTIMONY that the above is a copy of the original remaining on file in
 the Department of Internal Affairs of Pennsylvania, made
 conformably to an Act of Assembly approved the 16th day of
 February, 1833, I have hereunto set my Hand and caused
 the Seal of said Department to be affixed at Harrisburg,
 this sixth day of February 1906.

Isaac N. Brown
 Secretary of Internal Affairs.